



HD CORROSION SHIELD

A ONE-STEP, THICK FILM COATING RECOMMENDED FOR USE IN HIGHLY CORROSIVE ENVIRONMENTS.

RECOMMENDED USES

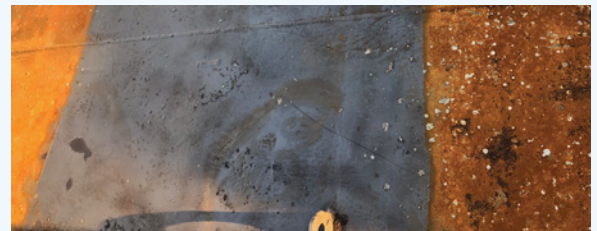
- Equipment
- Parts
- Wellheads
- Tank deck piping & valves
- Fitting & Flanges
- Offshore rigs
- Machined surfaces
- Sculptures
- Cranes
- Motors
- Bottom of ballast tank plating

ADVANTAGES

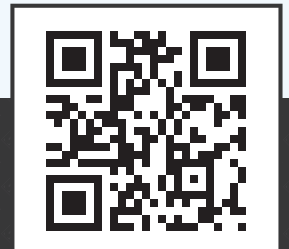
- 1000+ hours without corrosion in ASTM B117-18 Salt Spray Chamber Test
- Ultra low VOCs & Zinc-Free
- Dielectric strength 3,200 volts
- Works on dissimilar metals
- Rubber compatible to ASTM D471 standards
- Wide range of operating temperatures
- Safe on batteries, electrical and electronics
- Can be applied over existing rust and paint
- Can be applied to damp surfaces
- Removes easily with high pH detergent
- Environmentally friendly



BEFORE
Sandblasted white metal. Center coated in S2S



AFTER
Coated area rust free after 12 months exposure on Gulf of Mexico





HD CORROSION SHIELD

S2S HD Corrosion Shield works by polar bonding to metal surfaces, like a magnet to steel, and displacing water and oxygen. It creates an even, lubricating thick film that creeps into hard to reach areas, providing long lasting protection against rust and corrosion and excellent anti-seize capabilities.

For a thin, clear protective coating for equipment, machinery, monuments and much more, try **S2S Corrosion Shield**.

IDEAL SOLUTION FOR LONG TERM STORAGE, LAY-UP AND EXPORT OF METAL PIPING, PLATES AND EQUIPMENT

APPLICATION

Application of **S2S HD Corrosion Shield** requires no surface preparation. It is easily applied by air or battery-operated paint sprayer, brush or roller. Provides an 13-20 mil top-coat. Area coverage per gallon of product is 100 sq/ft.

REMOVAL

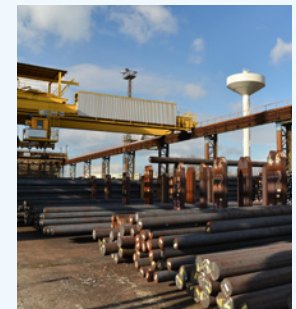
S2S HD Corrosion Shield bonds to metal for long lasting adhesion. It does not typically need to be removed before reactivating equipment but if desired simply wash with a high pH detergent and water.



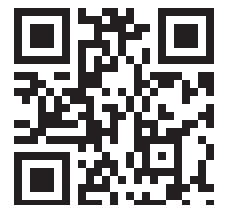
BEFORE
Sandblasted white metal



AFTER
6 months exposure on Gulf of Mexico



1-888-617-7558
www.ship-2-shore.com



SCAN THE QR CODE WITH YOUR PHONE CAMERA TO LEARN MORE